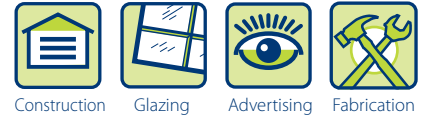




# PALGLAS®

Flat Extruded Acrylic Sheet



## ► Overview

PALGLAS flat extruded acrylic sheet offers light transmission that surpasses glass, but at only half the weight of glass.

Inherently UV resistant, PALGLAS is an excellent choice for both indoor and outdoor applications. Its high clarity and formability offer designers a world of options, from small fabricated items and displays, to signs, railings, and more.

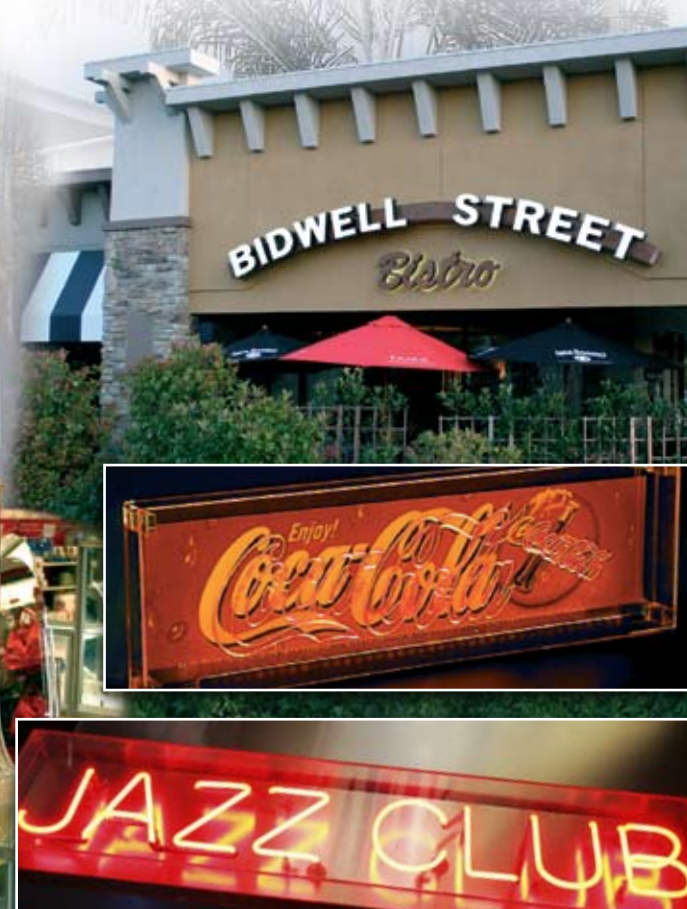
For maximum yield and convenience, PALGLAS can be ordered in custom sizes and thicknesses as part of Palram's "Run-to-Size" program.

## ► Main Benefits

- Up to 92% light transmission
- Inherently UV resistant
- Stronger than glass and less than half its weight
- High gloss appearance
- Easily formed and fabricated
- Good chemical resistance
- Good thermal insulation

## ► Typical Applications

- Illuminated and 3D signage
- Digital and screen printed signs
- Lightweight high clarity glazing
- Attractive fabricated items & displays
- Transparent furniture
- Light fixtures



## ► Standard Specifications

Dimensions	Inches	mm
<b>Standard Thicknesses</b>	0.093	2.36
	0.100	2.5
	0.118	3
	0.177	4.5
	0.220	5.5
<b>Available Thicknesses</b>	0.40 — .500	1 — 12.7
<b>Standard Sheet Sizes</b>	48 x 96	1220 x 2440
	49 x 97	1245 x 2464
<b>Colors</b>	Transparent: Clear Translucent: White Opal	

## ► Additional Products and Run-to-Size

Standard product can change according to market demand and additional widths or thicknesses may become standard. Please contact your Palram Rep for current availability. Special and custom colors, as well run to size lengths, thicknesses, and widths are available upon request, subject to minimum order requirements.

## ► One stop. More products.

Polycarbonate	Description
PALTUF™	General purpose flat solid polycarbonate sheet for interior use
PALSUN®	Flat solid polycarbonate sheet, UV protected on one side
PALSUN® UV2	UV protection on both sides
PALSUN® Embossed	Embossed surface (E102, prismatic, hair cell)
PALGARD™	Abrasion resistant on one or both sides
SUNLITE®	Complete line of multi-wall polycarbonate sheet
PVC	Description
PALIGHT® Premium	Foam PVC sheet optimized for digital and screen printing
PALIGHT GPS	Competitively priced Foam PVC sheet for general purpose use
PALOPAQUE®	Type 1 solid PVC sheet
PALCLEAR®	Water-clear PVC sheet

Inasmuch as PALRAM Industries has no control over the use to which others may put the material, it does not guarantee that the same results as those described herein will be obtained. Each user of the material should make his own tests to determine the material's suitability for his own particular use. Statements concerning possible or suggested uses of the materials described herein are not to be construed as constituting a license under any PALRAM Industries patent covering such use or as recommendations for use of such materials in the infringement of any patent. PALRAM Industries or its distributors cannot be held responsible for any losses incurred through incorrect installation of the material. In accordance with our company policy of continual product development you are advised to check with your local PALRAM Industries supplier to ensure that you have obtained the most up to date information.



## PALRAM AMERICAS, INC.

9735 Commerce Circle, Kutztown, PA 19530  
Phone: (800) 999-9459 Fax: (610) 285-9928  
sales.americas@palram.com

[www.PalramAmericas.com](http://www.PalramAmericas.com)

## ► Typical Physical Properties

Property	Units	Value
<b>Density</b>	lbs/ft <sup>3</sup> (g/cm <sup>3</sup> )	75 (1.19)
<b>Heat Deflection Temperature</b>	°F (°C)	195 (91)
<b>Service Temperature Range</b>	°F (°C)	-40 to 176 (-40 to 80)
<b>Coefficient of Linear Thermal Expansion</b>	in/in°F (cm/cm°C)	3.9 x 10 <sup>-5</sup> ( 7.0 x 10 <sup>-5</sup> )
<b>Thermal Conductivity</b>	BTU-in/hr-ft <sup>2</sup> -°F (W/mK)	1.32 (.19)
<b>Tensile Strength at Break</b>	PSI (MPa)	10,152 (70)
<b>Elongation at Break</b>	%	4
<b>Tensile Modulus of Elasticity</b>	PSI (MPa)	464,000 (3,200)
<b>Flexural Strength</b>	PSI (MPa)	15,900 (110)
<b>Flexural Modulus</b>	PSI (MPa)	464,000 (3200)
<b>Izod Impact Strength Notched</b>	ft.lbs./in (J)	0.3 (16)
<b>Rockwell Hardness</b>	R Scale	123R
<b>Light Transmission</b>	%	92
<b>Haze</b>	%	<1
<b>Yellowness Index</b>		<1.5

## ► Weather and UV Resistance

PALGLAS is inherently UV resistant and its wide service temperature range, -40 °F to 176 °F, makes it suitable for outdoor applications. A limited warranty against yellowing is available.

## ► Forming and Fabrication

PALGLAS can be fabricated, machined and thermoformed. PALGLAS is easily hot line bent and shaped into a wide variety of forms. PALGLAS can be bonded to itself and other materials.



Authorized Dealer